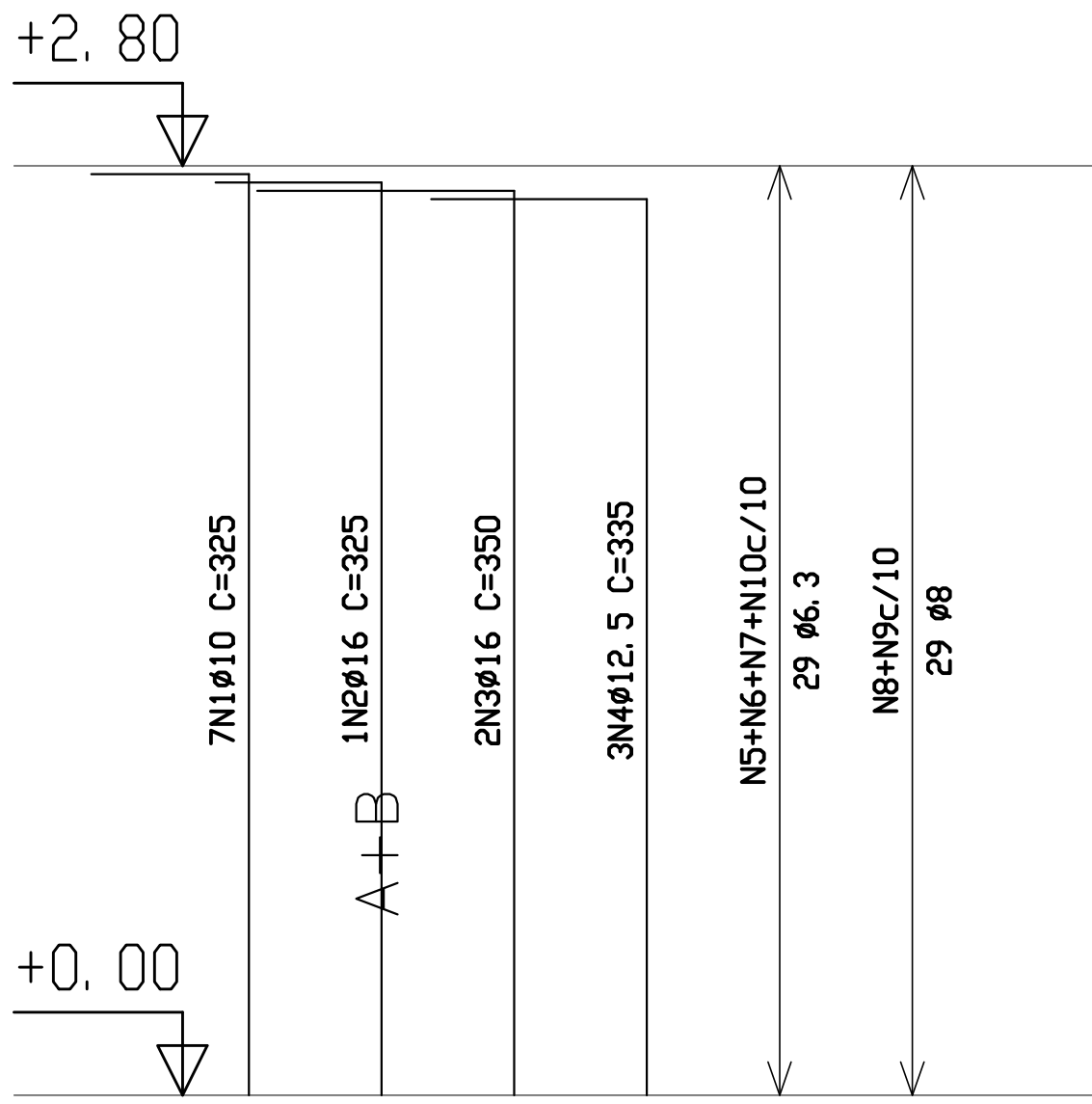
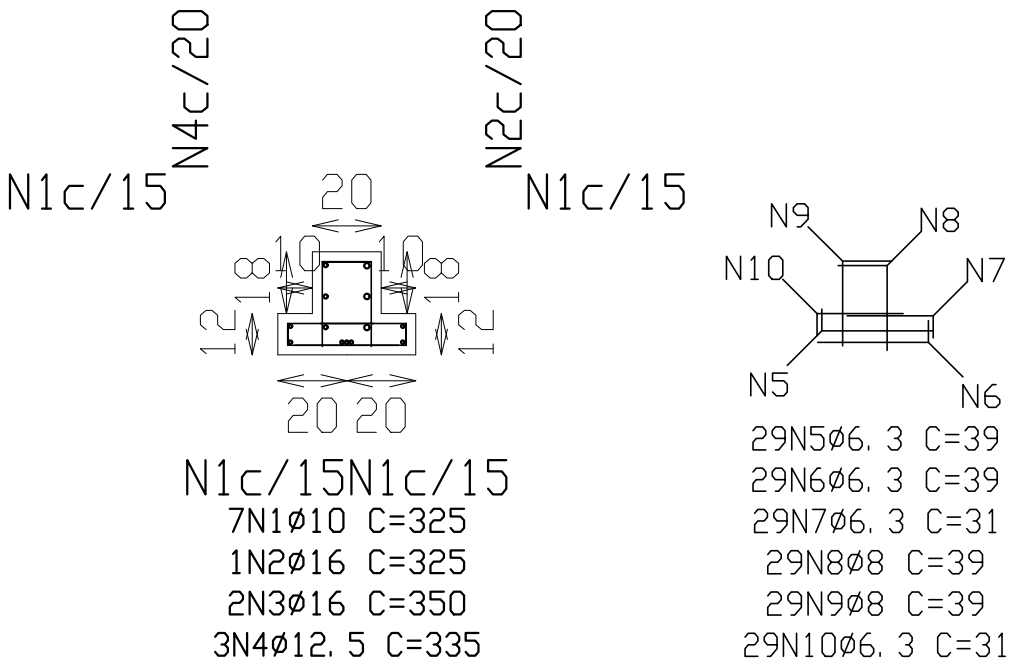


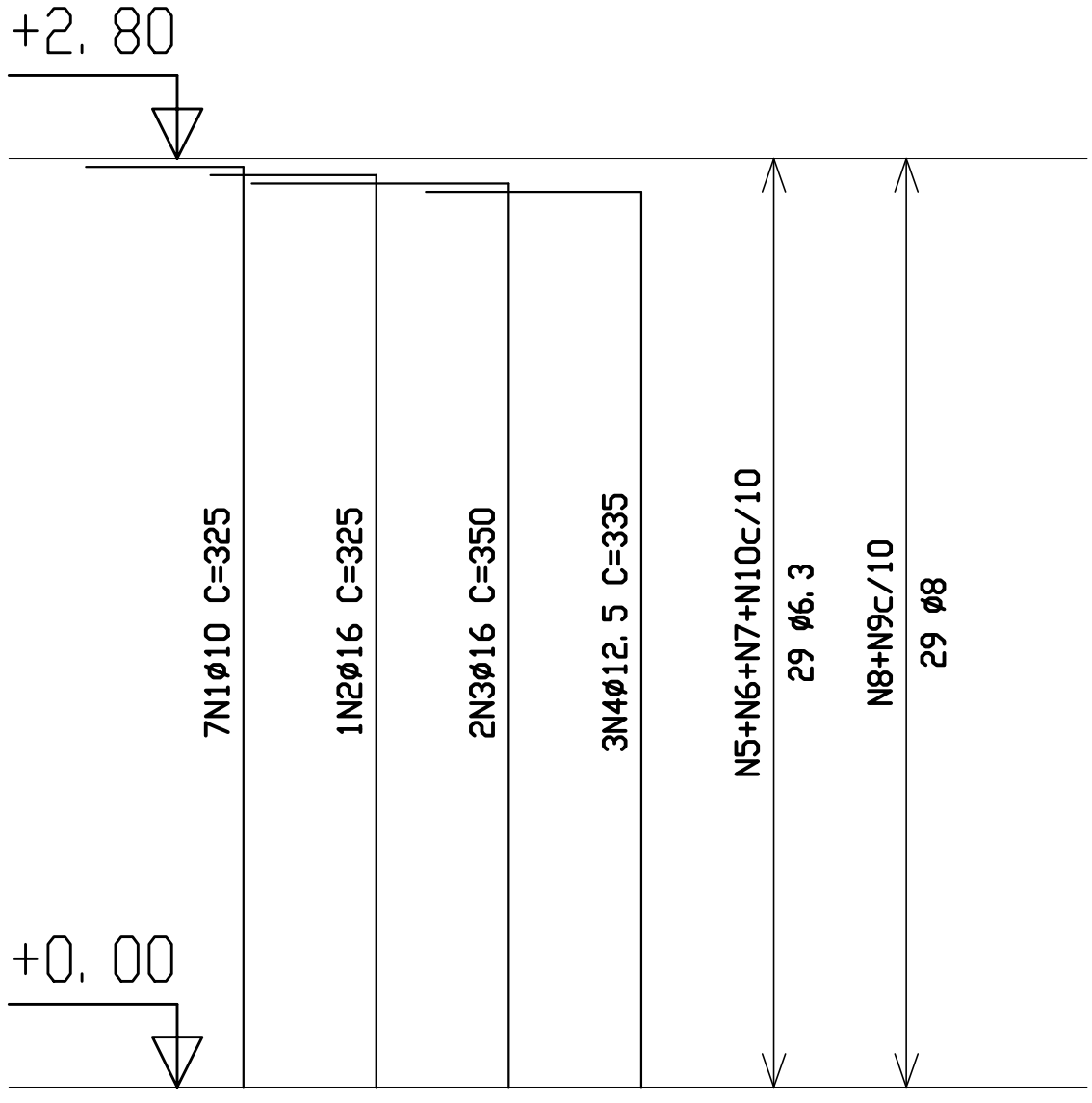
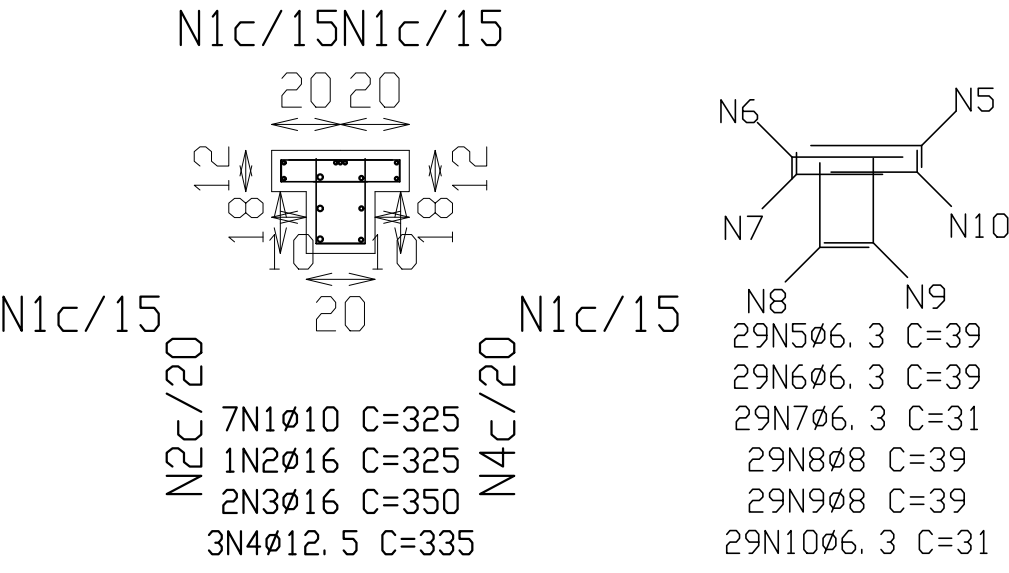
P4=P6

Aço	Pos.	Diam.	Q.	Comp. (cm)	Total (cm)	x 2 (cm)
CA-50-A	1	Ø10	7	325	2275	4550
'	2	Ø16	1	325	325	650
'	3	Ø16	2	350	700	1400
'	4	Ø12.5	3	335	1005	2010
'	5	Ø6.3	29	39	1131	2262
'	6	Ø6.3	29	39	1131	2262
'	7	Ø6.3	29	31	899	1798
'	8	Ø8	29	39	1131	2262
'	9	Ø8	29	39	1131	2262
'	10	Ø6.3	29	31	899	1798



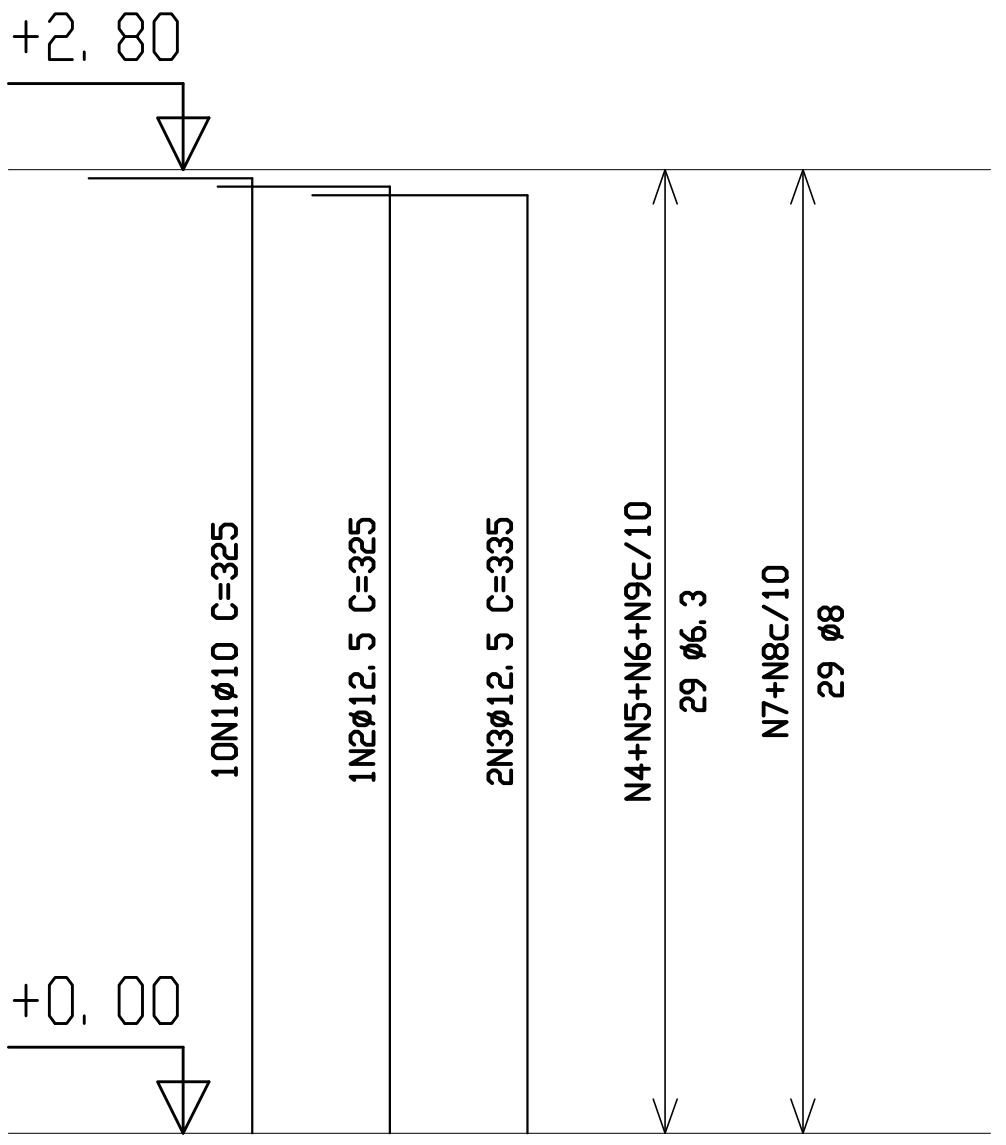
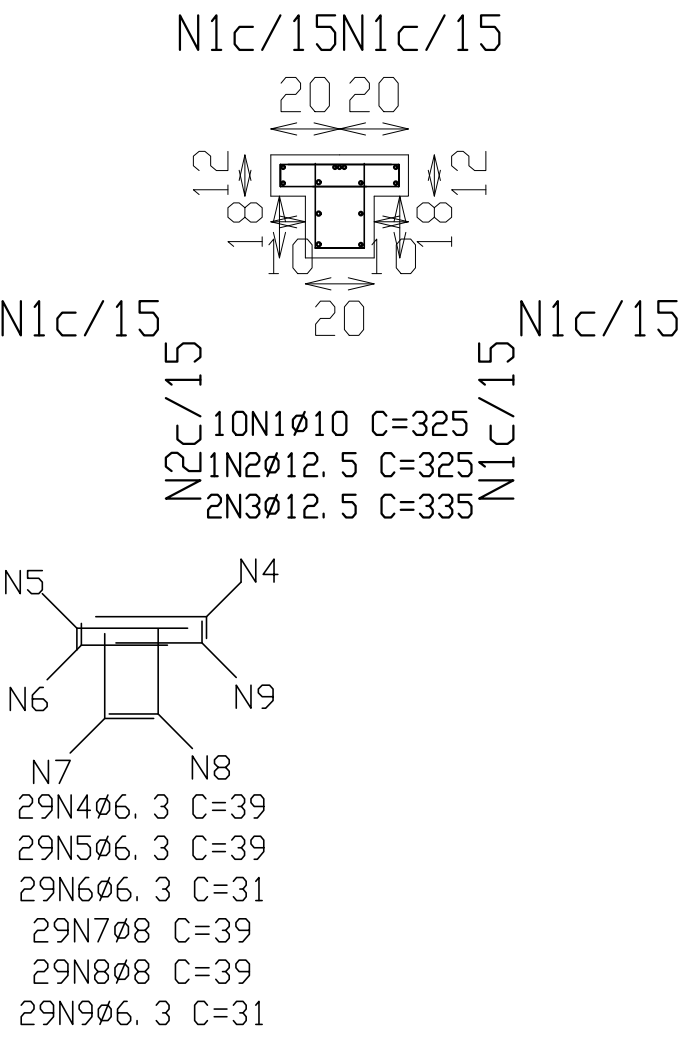
P30=P32=P34

Aço	Pos.	Diam.	Q.	Comp. (cm)	Total (cm)	x 3 (cm)
CA-50-A	1	Ø10	7	325	2275	6825
'	2	Ø16	1	325	325	975
'	3	Ø16	2	350	700	2100
'	4	Ø12.5	3	335	1005	3015
'	5	Ø6.3	29	39	1131	3393
'	6	Ø6.3	29	39	1131	3393
'	7	Ø6.3	29	31	899	2697
'	8	Ø8	29	39	1131	3393
'	9	Ø8	29	39	1131	3393
'	10	Ø6.3	29	31	899	2697



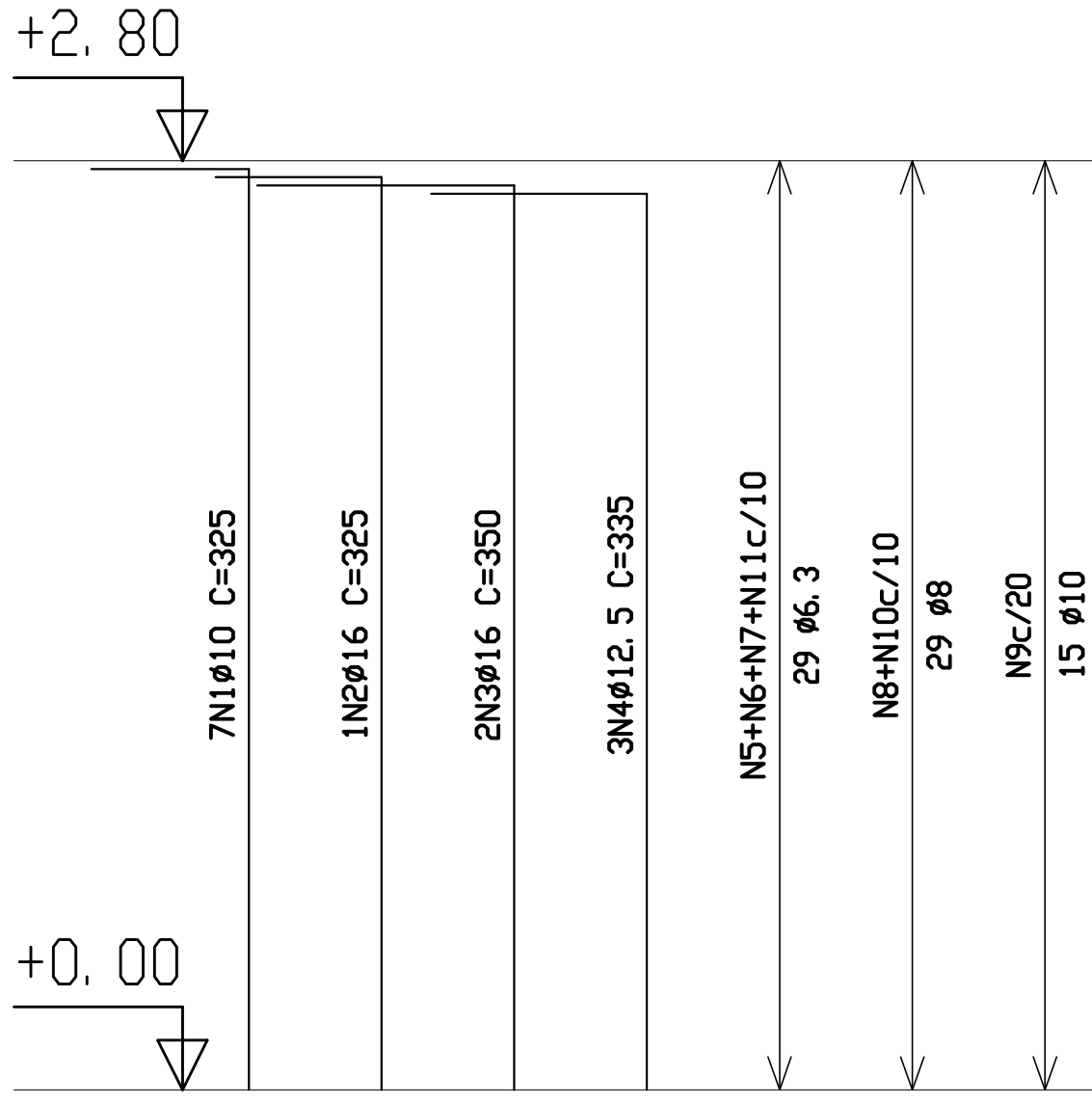
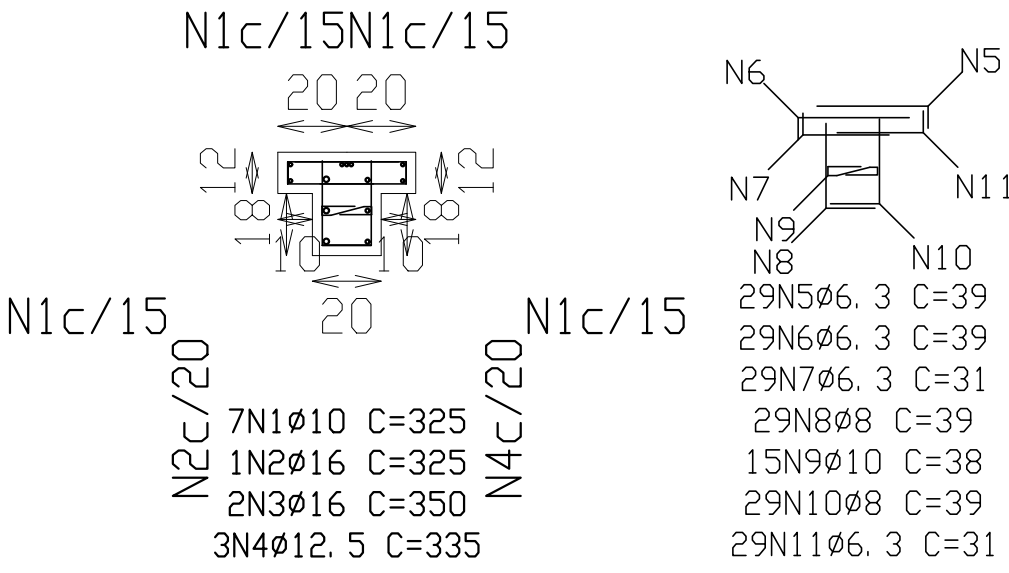
P39

Aço	Pos.	Diam.	Q.	Comp. (cm)	Total (cm)
CA-50-A	1	Ø10	10	325	3250
'	2	Ø12.5	1	325	325
'	3	Ø12.5	2	335	670
'	4	Ø6.3	29	39	1131
'	5	Ø6.3	29	39	1131
'	6	Ø6.3	29	31	899
'	7	Ø8	29	39	1131
'	8	Ø8	29	39	1131
'	9	Ø6.3	29	31	899



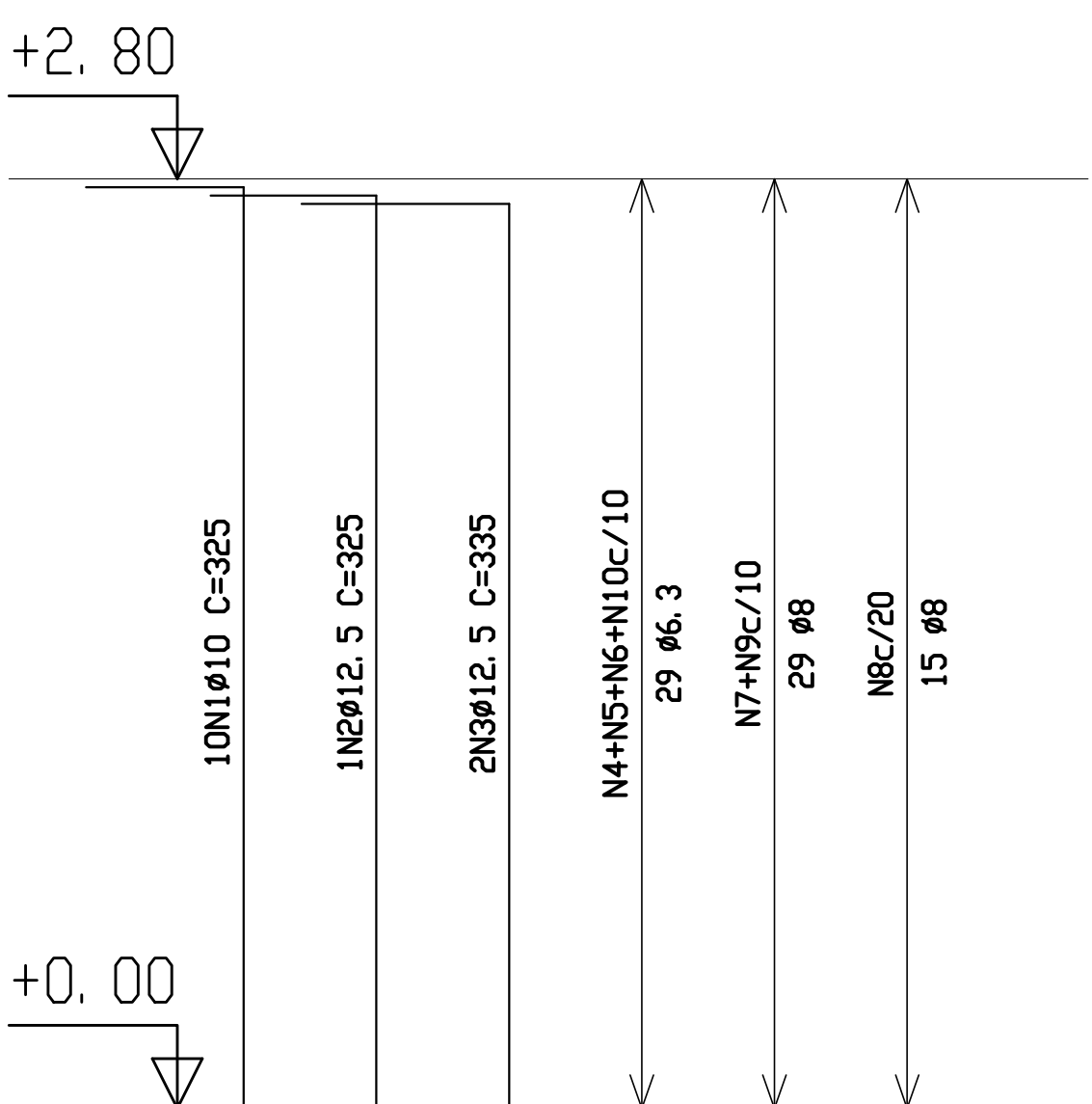
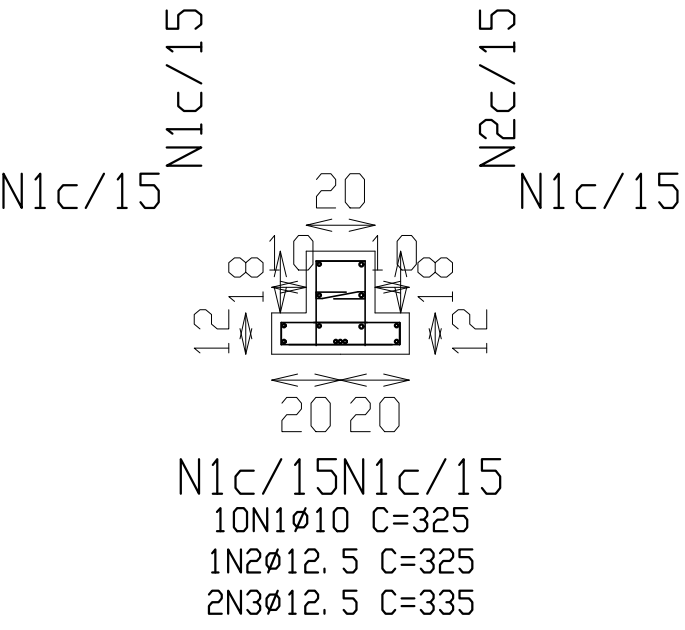
P27=P37

Aço	Pos.	Diam.	Q.	Comp. (cm)	Total (cm)	x 2 (cm)
CA-50-A	1	Ø10	7	325	2275	4550
'	2	Ø16	1	325	325	650
'	3	Ø16	2	350	700	1400
'	4	Ø12.5	3	335	1005	2010
'	5	Ø6.3	29	39	1131	2262
'	6	Ø6.3	29	39	1131	2262
'	7	Ø6.3	29	31	899	1798
'	8	Ø8	29	39	1131	2262
'	9	Ø10	15	38	570	1140
'	10	Ø8	29	39	1131	2262
'	11	Ø6.3	29	31	899	1798



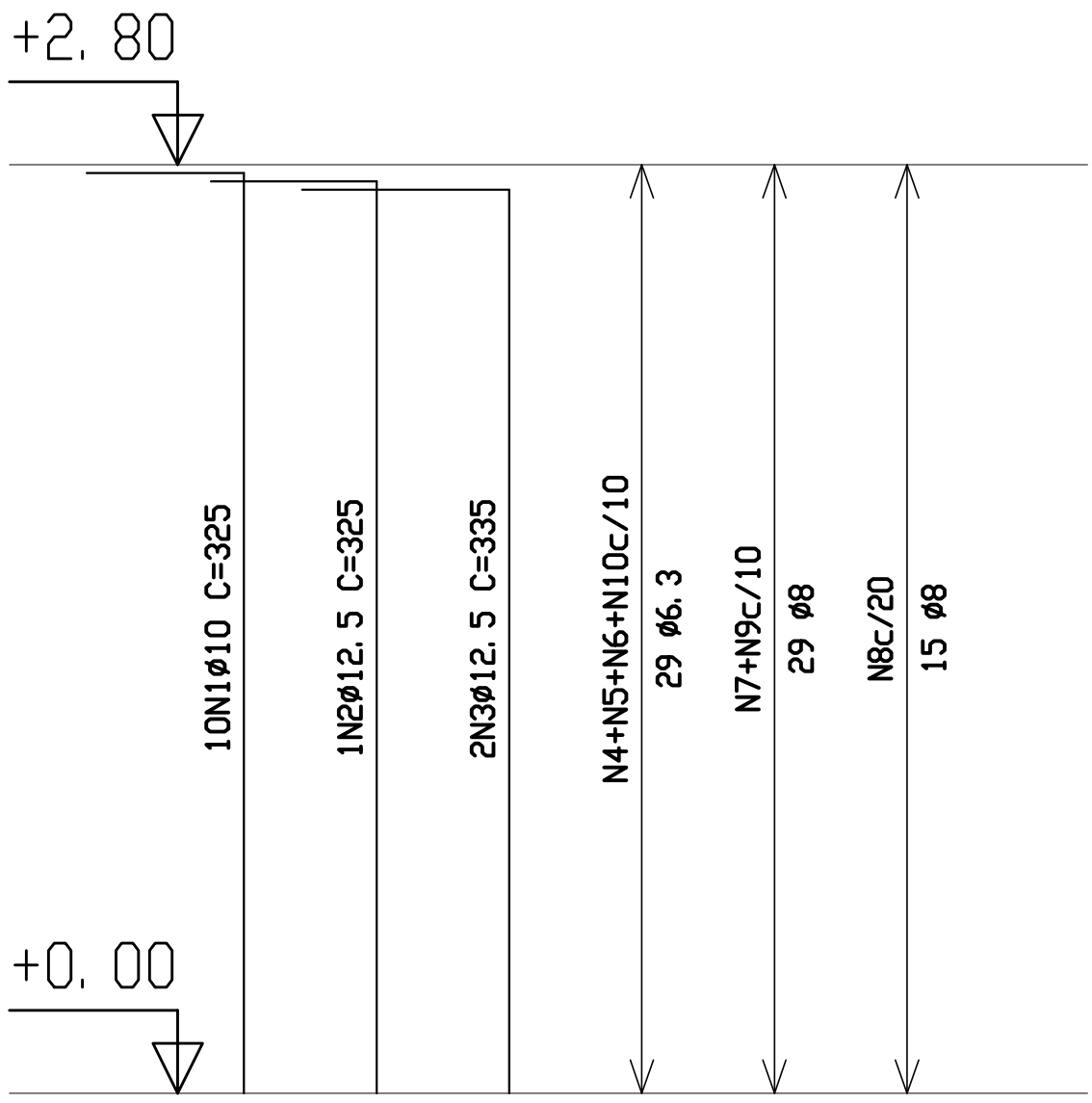
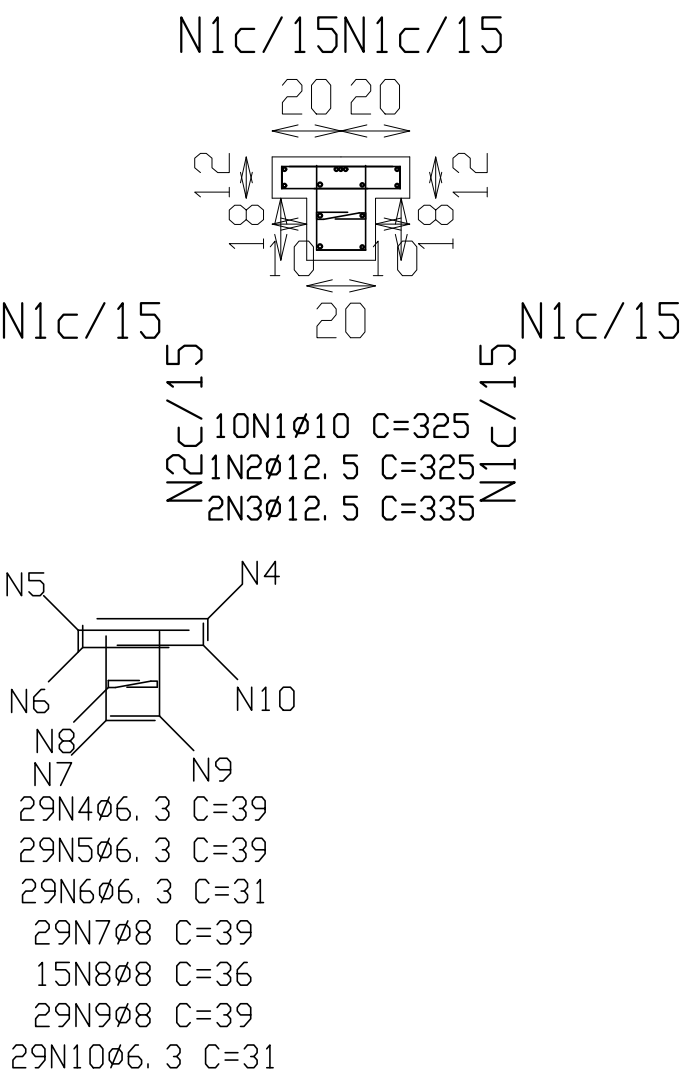
P13

Aço	Pos.	Diam.	Q.	Comp. (cm)	Total (cm)
CA-50-A	1	Ø10	10	325	3250
'	2	Ø12.5	1	325	325
'	3	Ø12.5	2	335	670
'	4	Ø6.3	29	39	1131
'	5	Ø6.3	29	39	1131
'	6	Ø6.3	29	31	899
'	7	Ø8	29	39	1131
'	8	Ø8	15	36	540
'	9	Ø8	29	39	1131
'	10	Ø6.3	29	31	899



P41

Aço	Pos.	Diam.	Q.	Comp. (cm)	Total (cm)
CA-50-A	1	Ø10	10	325	3250
'	2	Ø12.5	1	325	325
'	3	Ø12.5	2	335	670
'	4	Ø6.3	29	39	1131
'	5	Ø6.3	29	39	1131
'	6	Ø6.3	29	31	899
'	7	Ø8	29	39	1131
'	8	Ø8	15	36	540
'	9	Ø8	29	39	1131
'	10	Ø6.3	29	31	899



PROJETO ESPAÇO EDUCATIVO URBANO II - 04 E 06 SALAS DE AULA					
ENDEREÇO:	DIVERSOS				
PROPRIETÁRIO:	FUNDO DE FORTALECIMENTO PARA A ESCOLA - FUNDESCOLA				
AUTOR DO PROJETO :	MANOEL FERNANDO PEREIRA SANTOS				
RESPONSÁVEL TÉCNICO:					
PROPRIETÁRIO					
AUTOR DO PROJETO					
AUTOR DO PROJETO					
RESP. TÉCNICO					
DILFO	CREA				
EST		PROJETO ESTRUTURAL		FOLHA	
		BLOCO PEDAGÓGICO DETALHE DE PILARES		14 22	
REVISÃO:	DATA :	ESCALA :	DESENHO :	WSTO:	
01-2006	ABRIL/2006	INDICADA			